

SR 15 SECTION 088 CSV T SOUTHERN SECTION



PUBLIC MEETING
NOVEMBER 15, 2017



Excellence Delivered As Promised

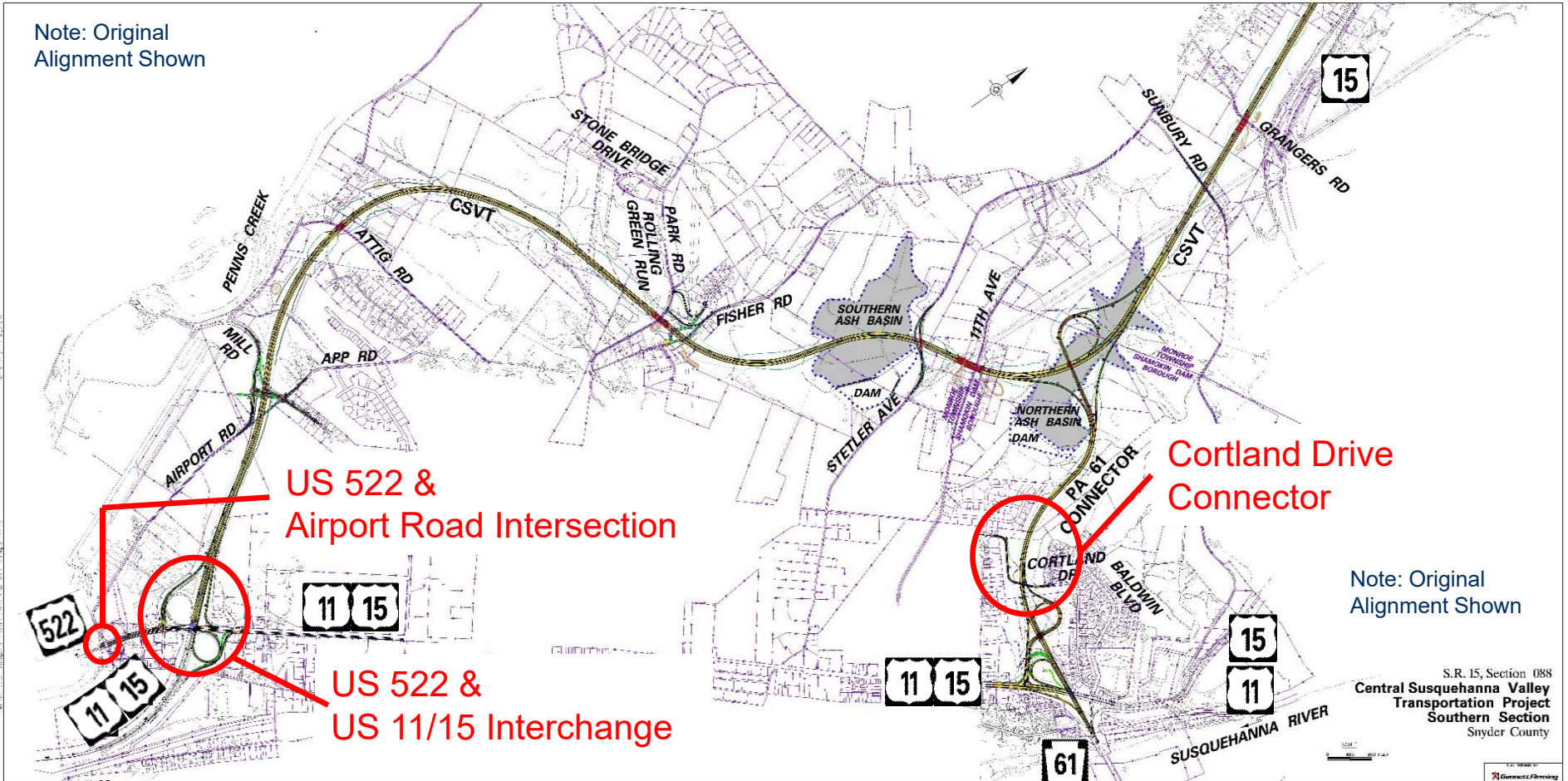
AGENDA

- **MEETING PURPOSE**
- **CSV T SOUTHERN SECTION**
 - **DESIGN CHANGES**
 - **MAY PUBLIC MEETING RECAP**
 - **ASH BASIN AVOIDANCE STUDIES**
 - **PENNDOT'S RECOMMENDED ALTERNATIVE**
 - **NEXT STEPS**
- **CSV T NORTHERN SECTION UPDATE**
- **OPEN HOUSE**

MEETING PURPOSE






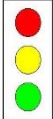
- Provide updates and continue to work through challenges to advance CSVT and ultimately achieve its long-term benefits
 - Review results of engineering/environmental studies and PennDOT's Recommended Alternative for avoiding ash basins
 - Receive input to consider as project design is further developed and evaluated

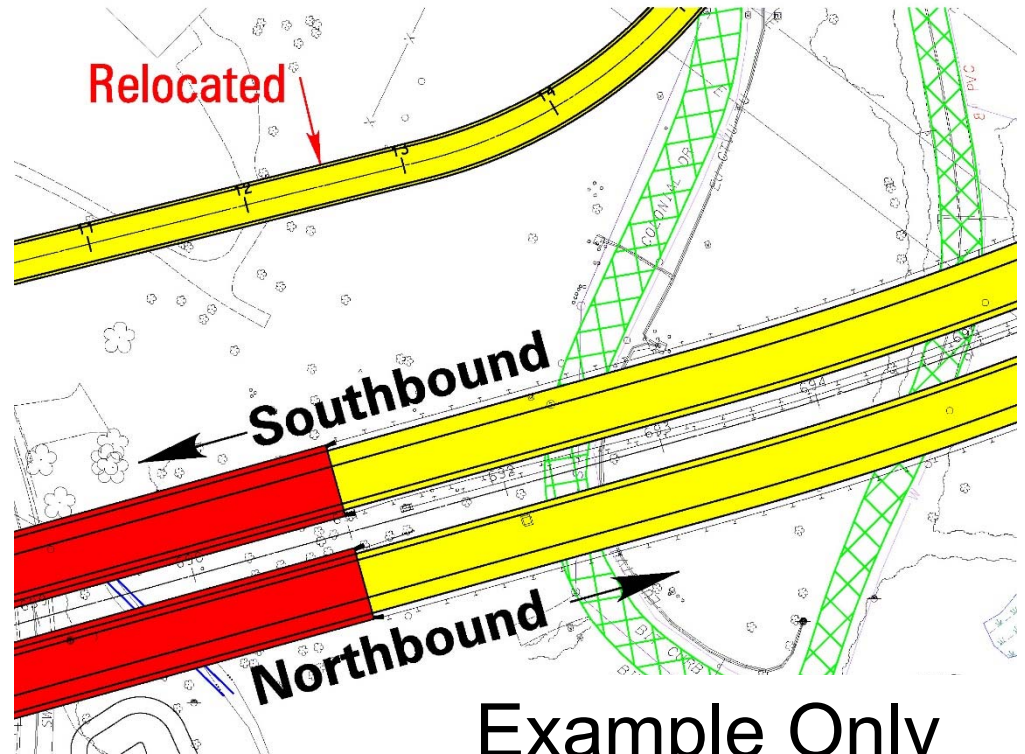
DESIGN CHANGES



DESIGN CHANGES

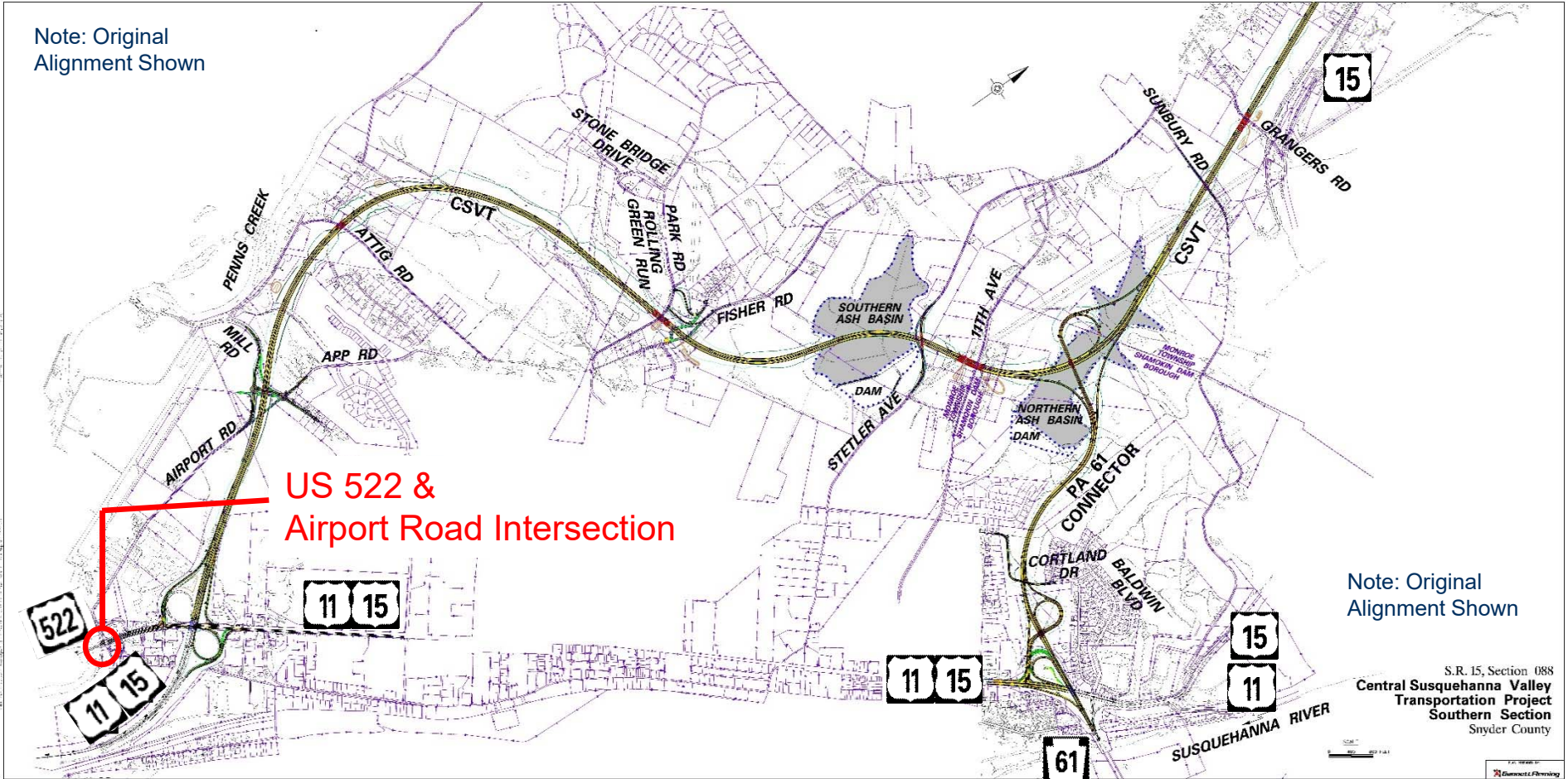
LEGEND

-  EXISTING ROADWAY REMOVAL
-  PROPOSED ROADWAY
-  BRIDGE WORK
-  PROPOSED STRUCTURE
-  PROPOSED SIGNAL
-  EXISTING SIGNAL



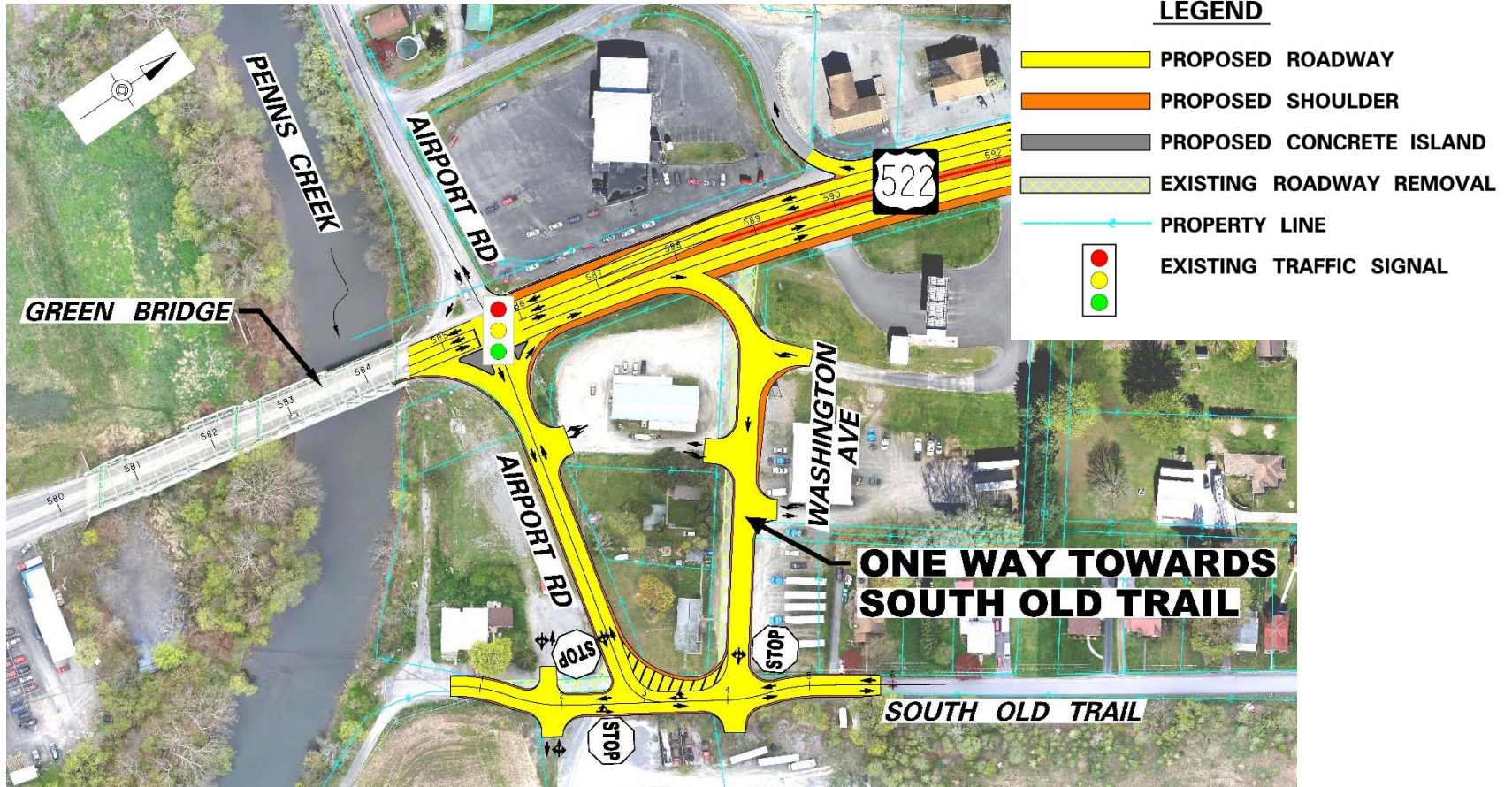
Example Only

DESIGN CHANGES

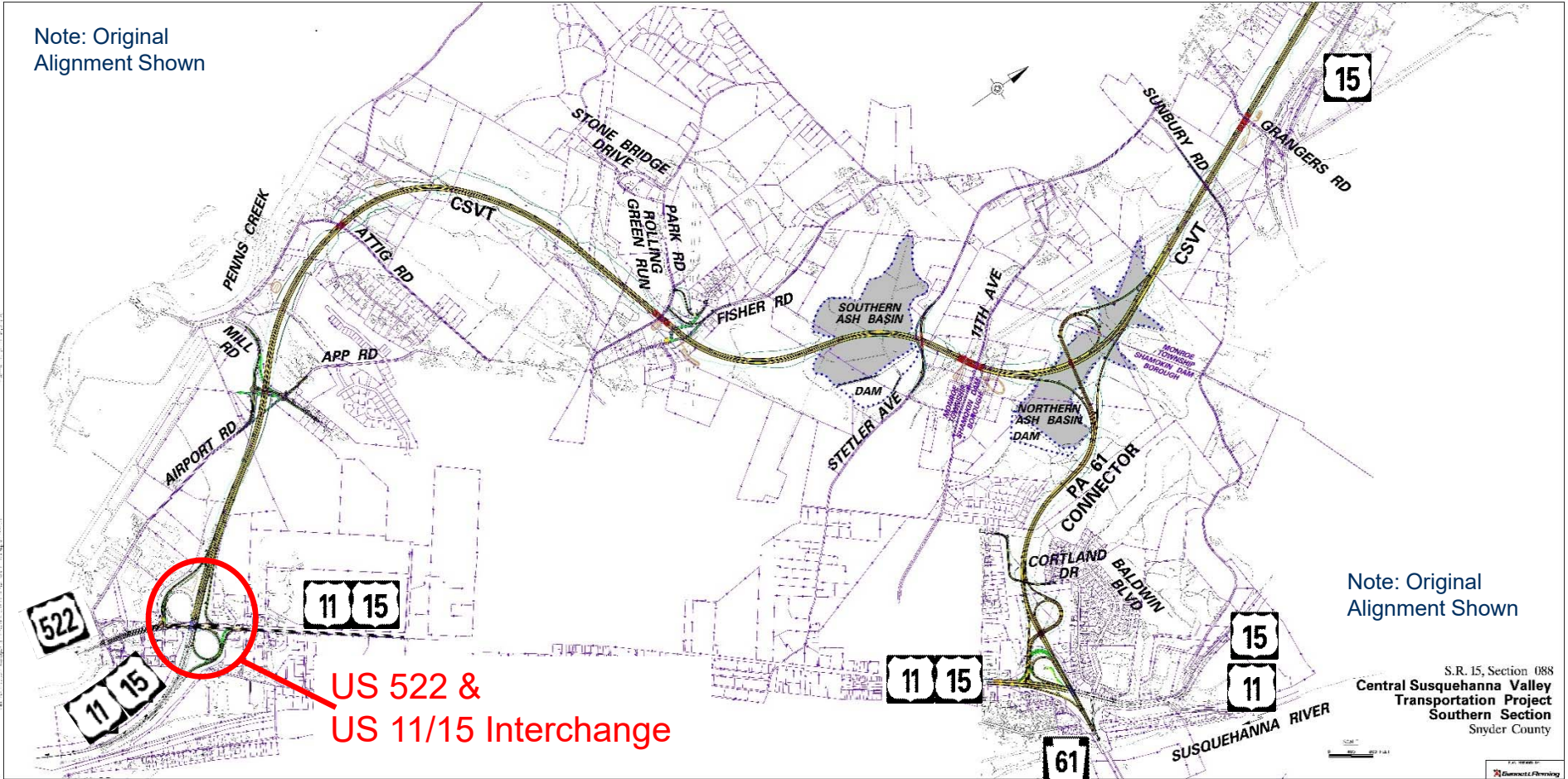


DESIGN CHANGES

US 522 & Airport Road Intersection – Proposed Jug Handle

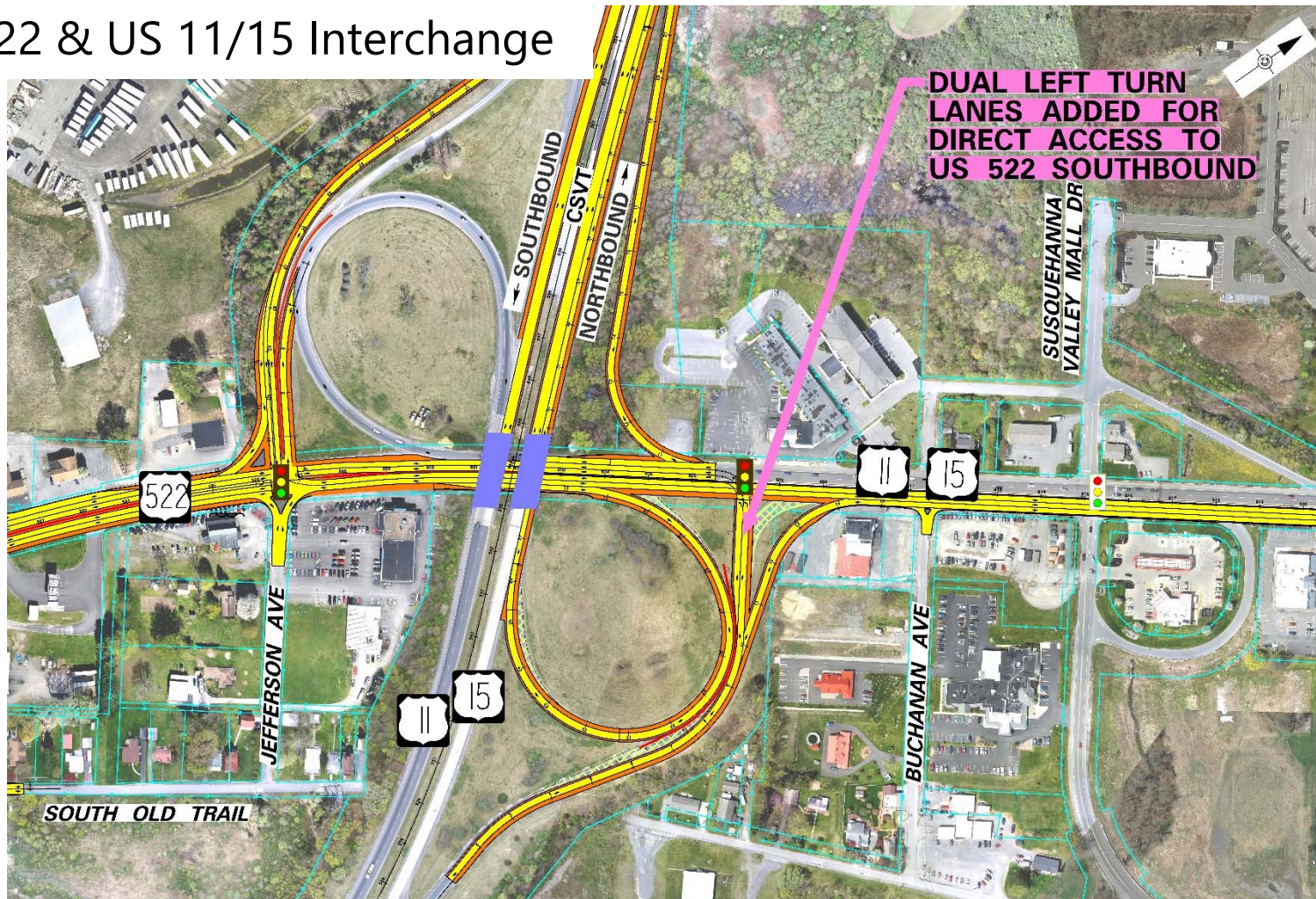


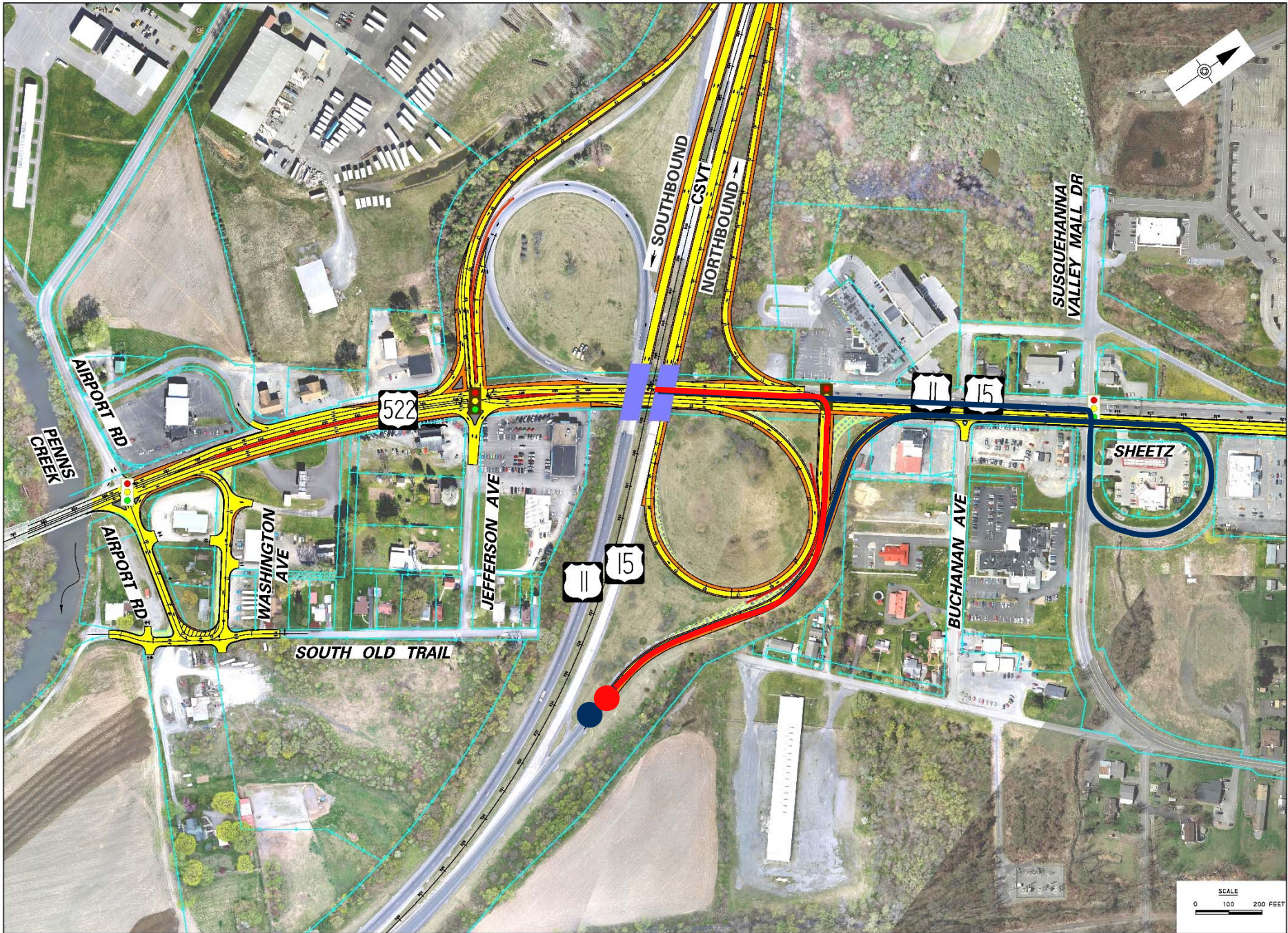
DESIGN CHANGES



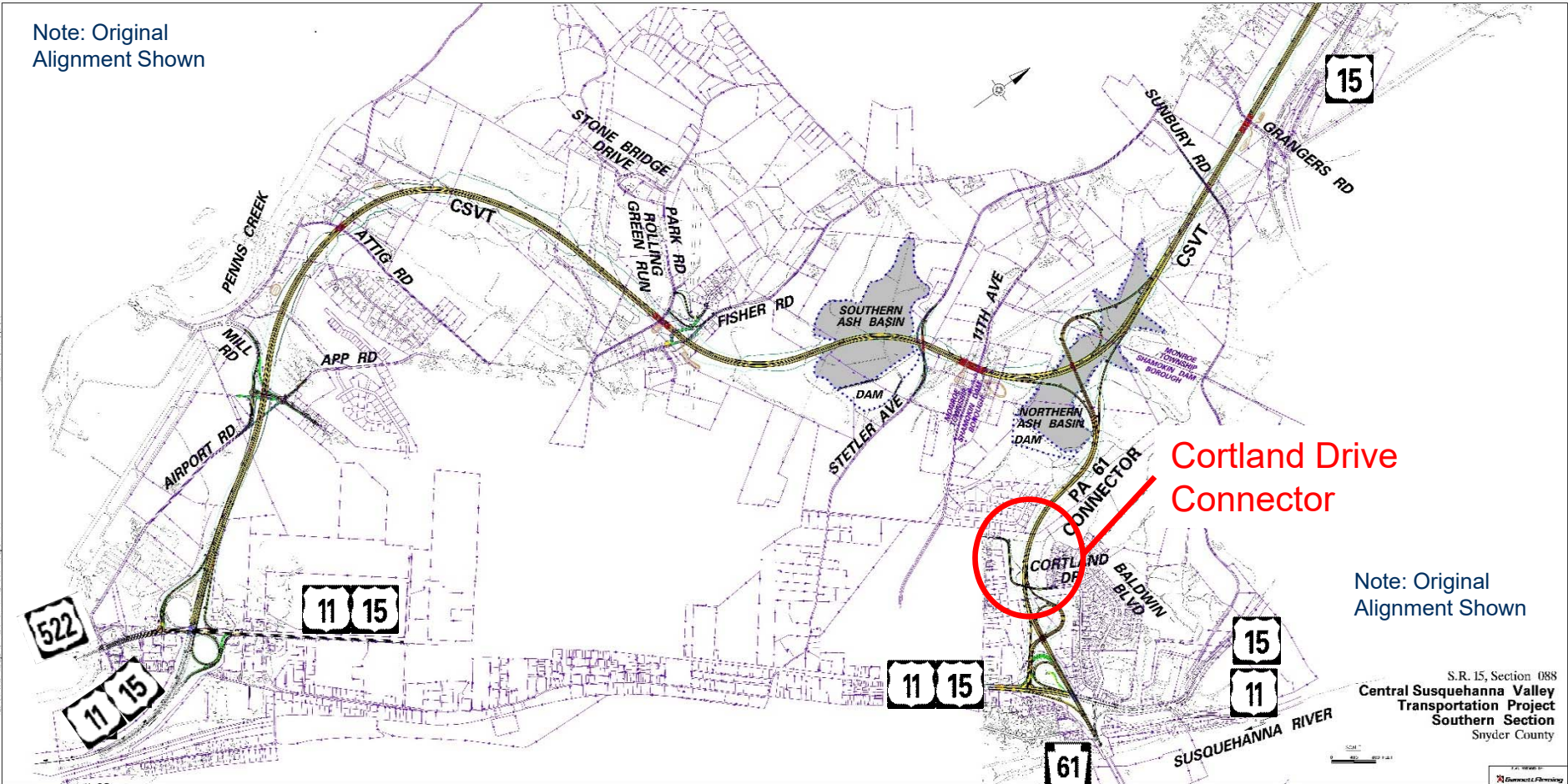
DESIGN CHANGES

US 522 & US 11/15 Interchange

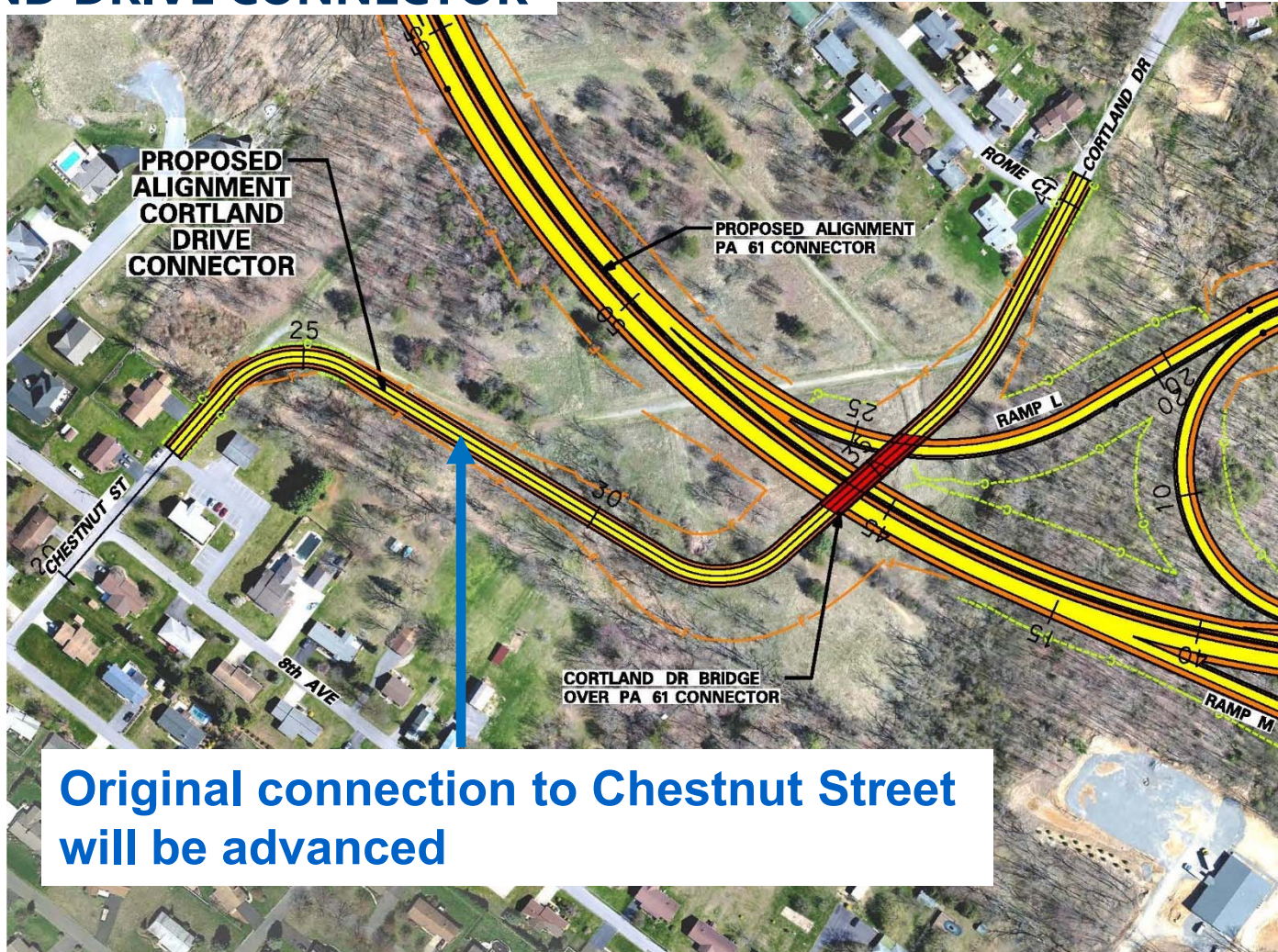




DESIGN CHANGES



CORTLAND DRIVE CONNECTOR

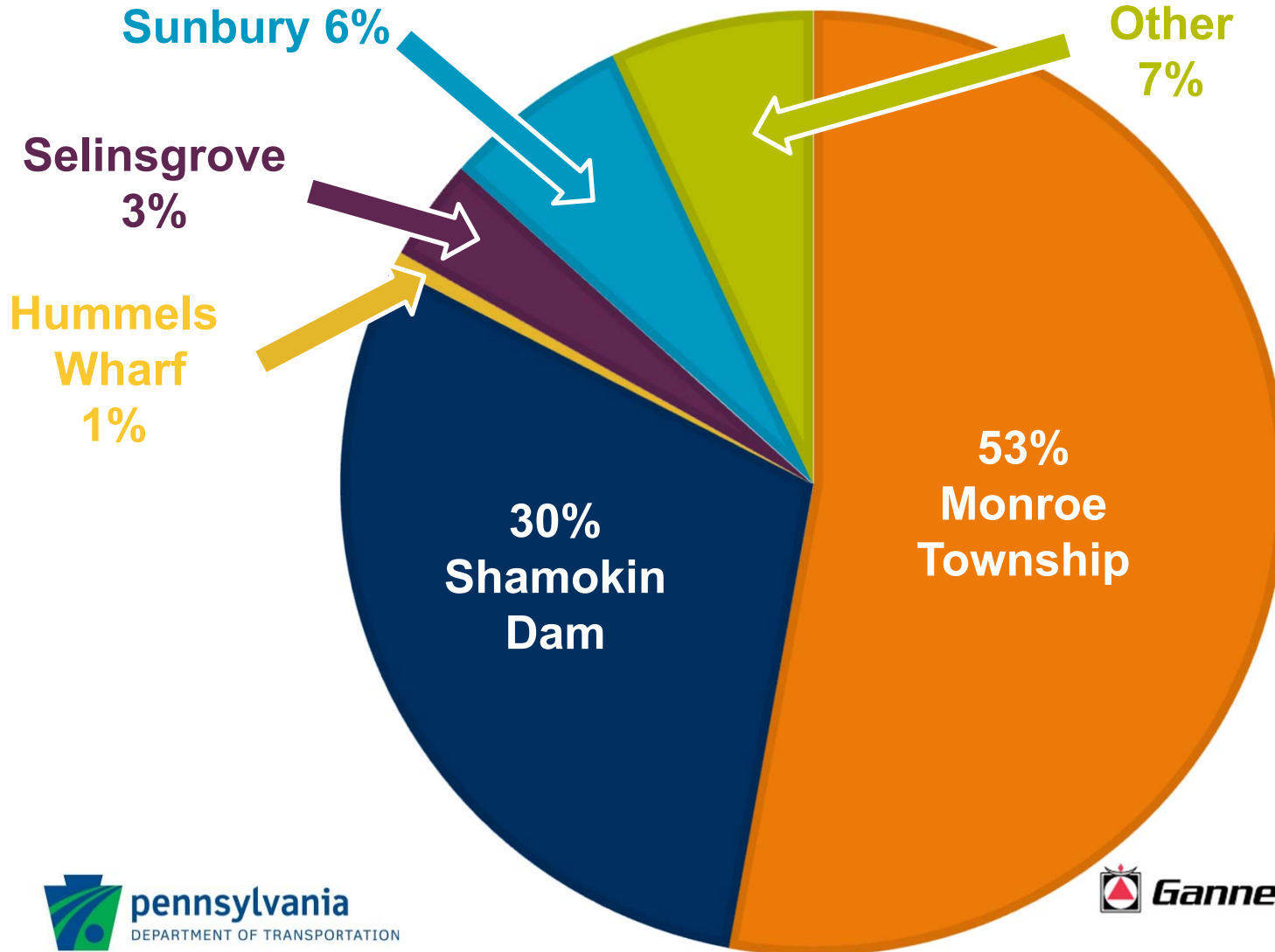


MAY PUBLIC MEETING RECAP

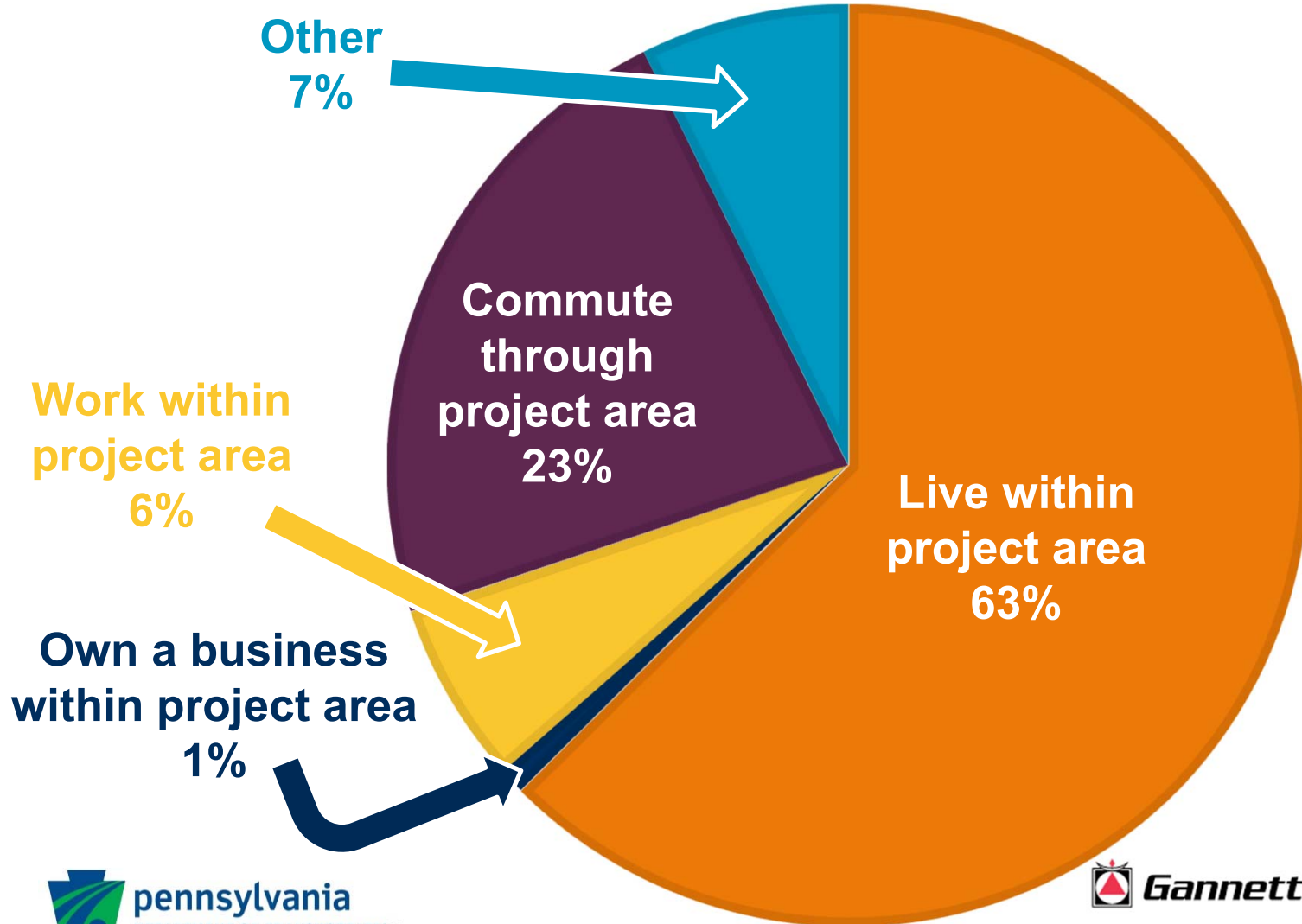
- Held May 25, 2017
- 300 attendees signed in
- 171 questionnaires returned



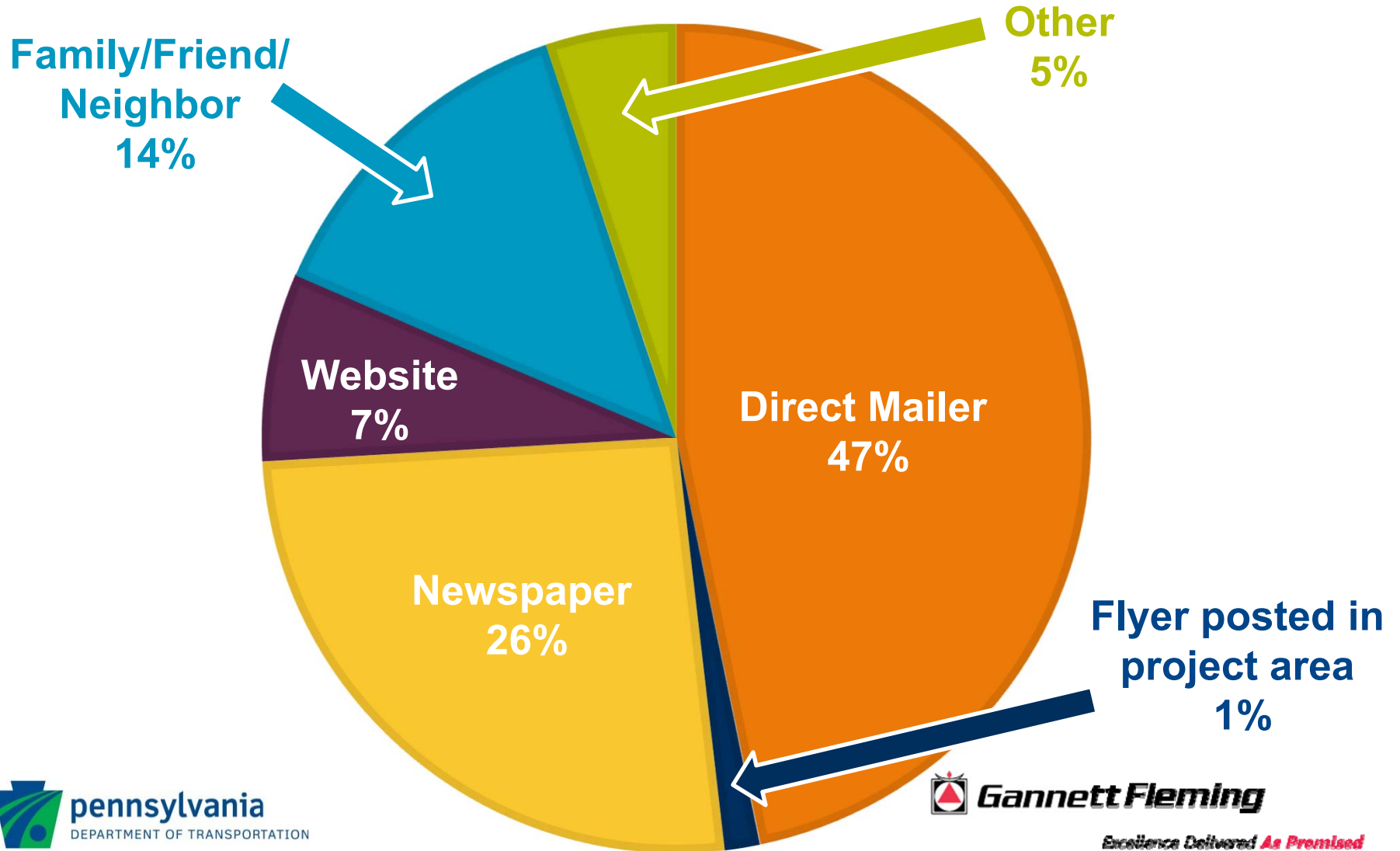
MAY SURVEY RESULTS – Where do you live?



MAY SURVEY RESULTS – What's your interest in the project?

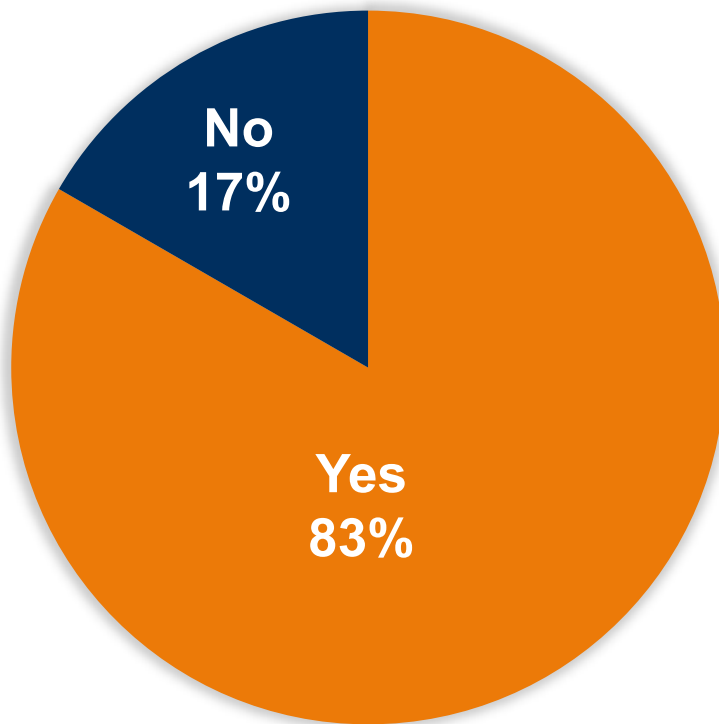


MAY SURVEY RESULTS – How did you hear about tonight’s meeting?

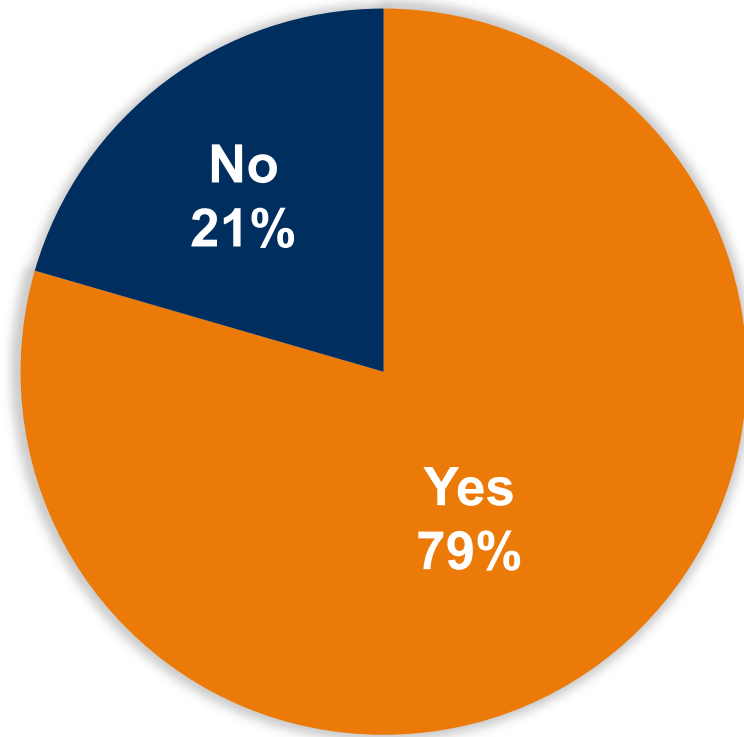


MAY SURVEY RESULTS – Are you satisfied with the information provided on...

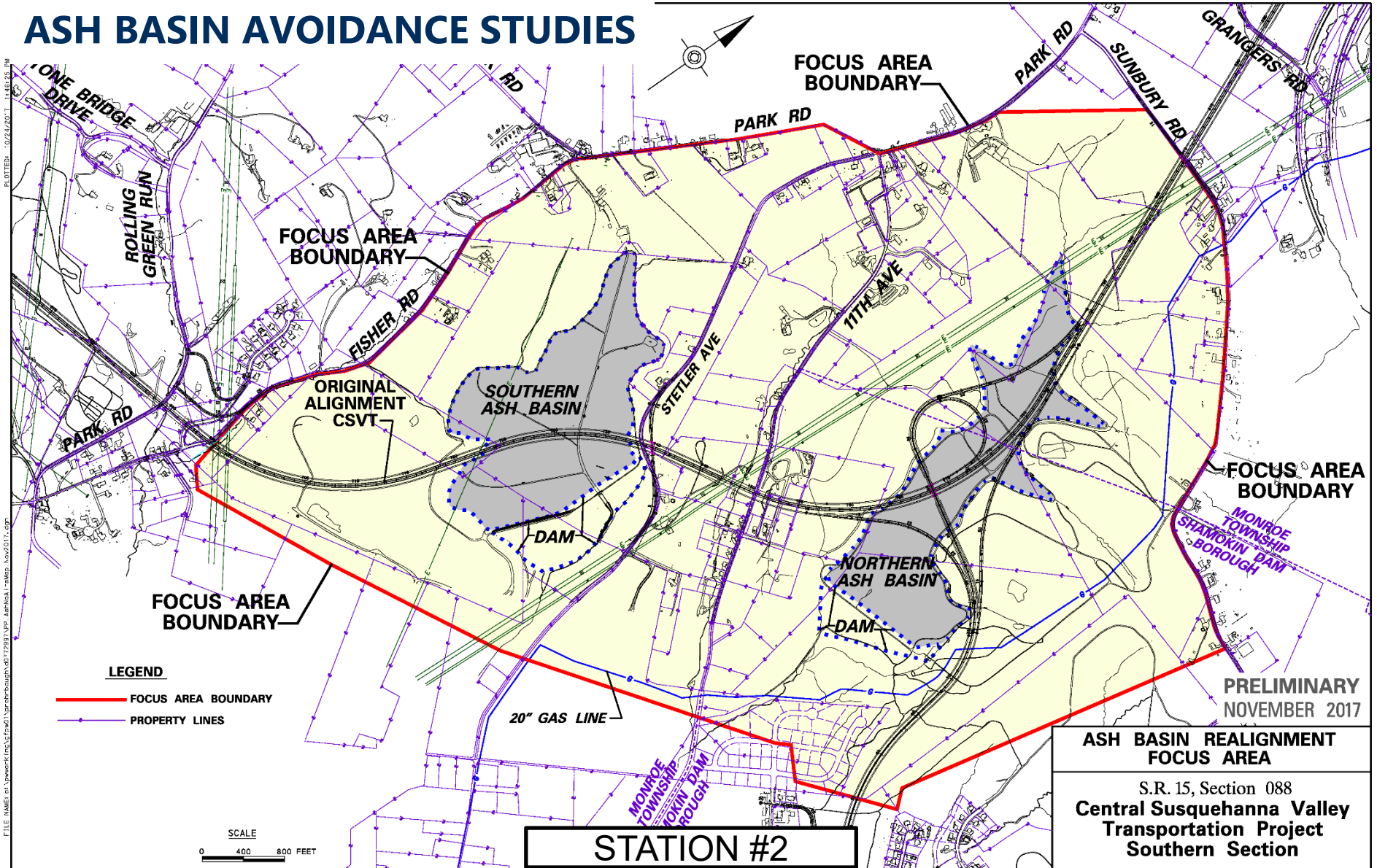
DESIGN CHANGES AND ACID ROCK ALIGNMENT SHIFT?



ASH BASIN AVOIDANCE ALTERNATIVES?

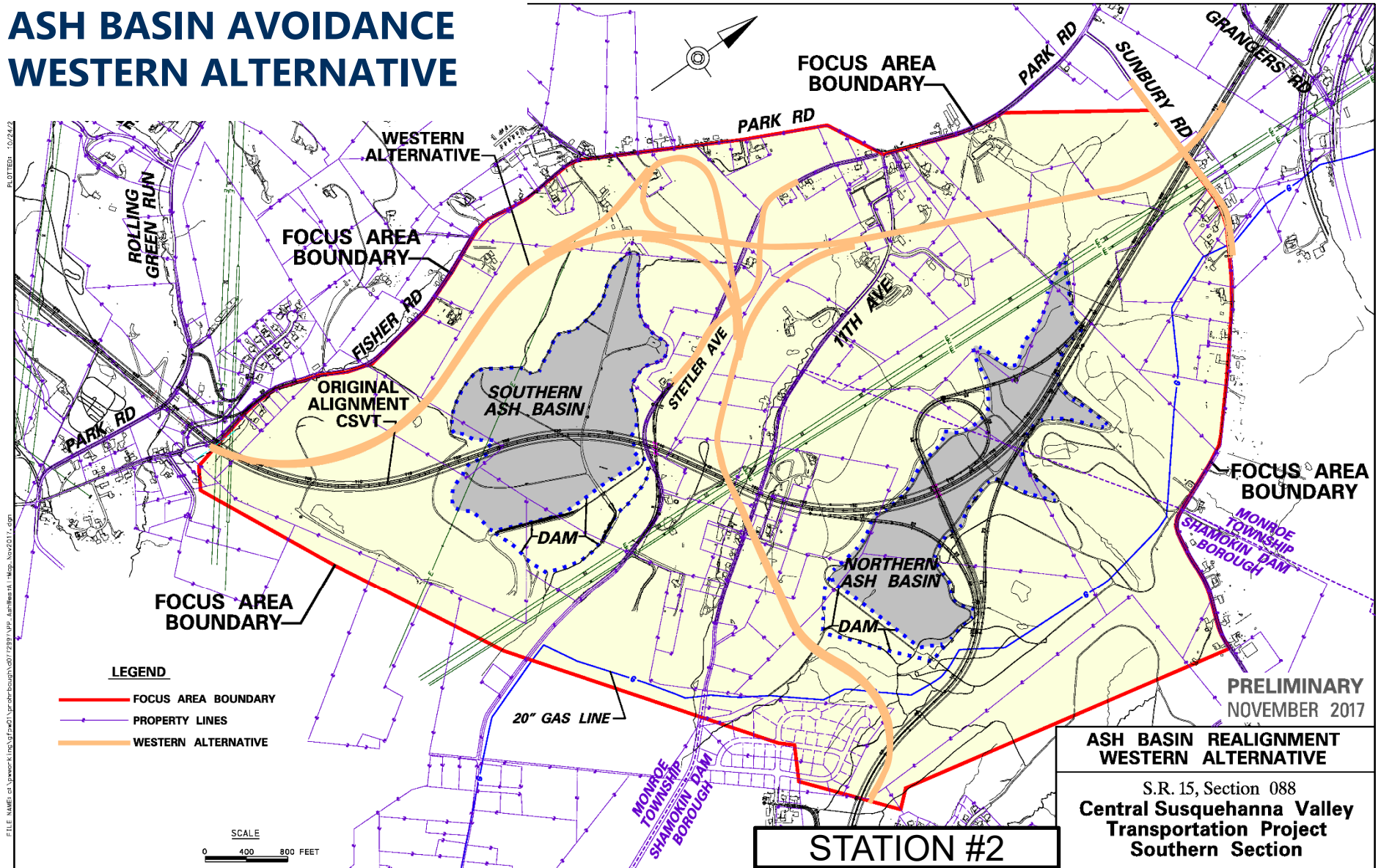


ASH BASIN AVOIDANCE STUDIES



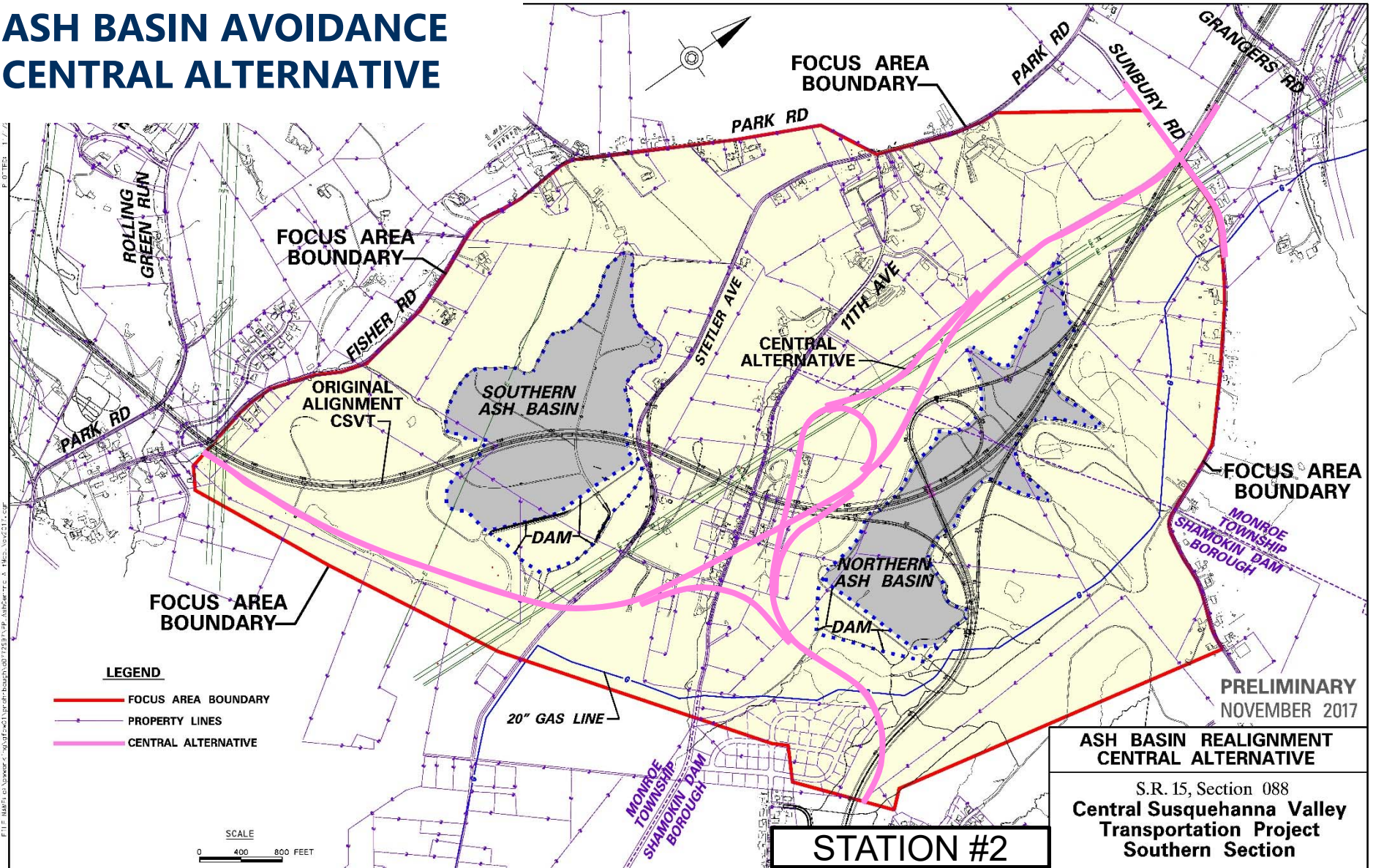
FILE NAME: c:\pwwork\res\csvt\ash\ashbasin\mxd Nov 2017.dwg

**ASH BASIN AVOIDANCE
WESTERN ALTERNATIVE**

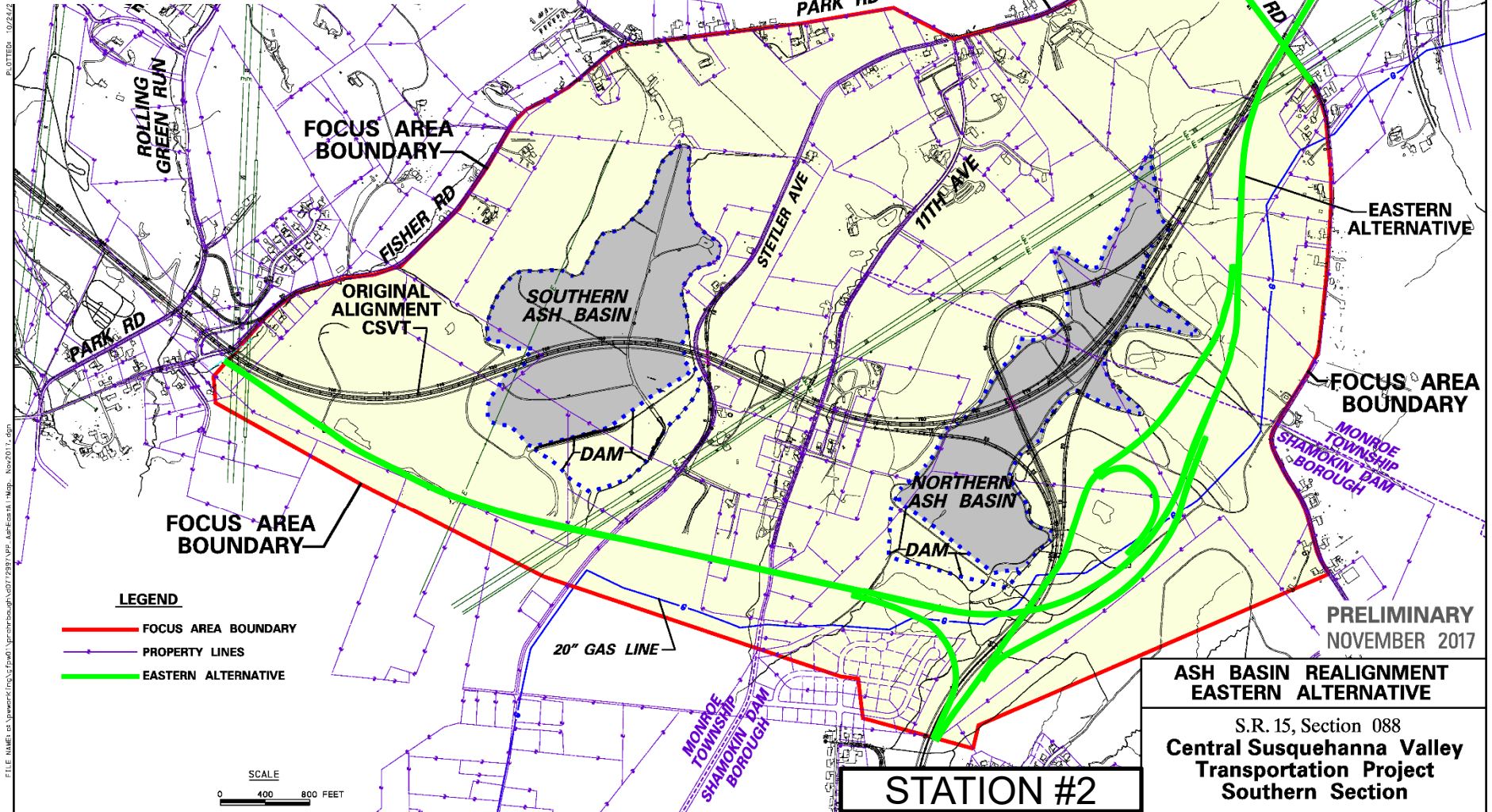


PLOTTER: 10/24/12
 FILE NAME: c:\pwwork\inc\pwwork\proj\shamokin\07/28/11\pwwork\11\map_nov2017.dgn

**ASH BASIN AVOIDANCE
CENTRAL ALTERNATIVE**



**ASH BASIN AVOIDANCE
EASTERN ALTERNATIVE**



P:\011212\011212.dwg
 FILE NAME: c:\pwwork\mcs\proj\011212\pwwork\011212\011212.dwg
 Nov 2011 11:45am

MAY SURVEY RESULTS – Public feedback on **Western Alternative**

Overall – Mixed: Medium volume of positive and negative comments

Positive comments the public provided

- Less environmental impact
- Less noise impact to developments
- No impact to new gas line / less impact to PPL transmission lines
- Highway is away from more densely populated areas

Negative comments the public provided

- Impact to property values / number of displacements
- Impact to farmland
- Longest PA 61 Connector

MAY SURVEY RESULTS – Public feedback on Central Alternative

Overall – Opposed: Low volume of positive comments;
Medium volume of negative comments

Positive comments the public provided

- Most sensible
- Least environmental impact

Negative comments the public provided

- Impacts most residences (displacements) / decreased property values
- Impact to active farmland
- Has a lot of bridge work
- Impact to PPL transmission lines

MAY SURVEY RESULTS – Public feedback on Eastern Alternative

Overall – Mixed: High volume of positive and negative comments

Positive comments the public provided

- Least impacts to residences (displacements)
- Smallest impact to active farmland
- Shortest PA 61 Connector

Negative comments the public provided

- Environmental impact (forested area)
- Impacts new UGI gas line
- Reduced future development potential (Shamokin Dam Borough)

MAY PUBLIC MEETING RECAP

- The Project Team appreciates the input received from the public.
 - Open house
 - Questionnaires
 - Follow-up emails and phone calls

- **Thank you for taking time to communicate!**



ASH BASIN AVOIDANCE STUDIES

- Engineering
 - Closer look at alignments
 - Geotechnical testing and analysis
- Environmental
 - Residential displacements
 - Streams and wetlands
 - Farmlands
 - Forestlands
 - Noise
- Stakeholder Coordination



STATION #2

ASH BASIN AVOIDANCE STUDIES – Engineering Findings

- Acid Rock Testing
 - Potential for acid rock on **Western Alternative**
- PA 61 Connector Usage
 - Projected usage compared to original alternative
 - » **Western Alternative** ↓ 30%
 - » **Central Alternative** ↑ 10%
 - » **Eastern Alternative** ↑ 30%
- Utility Relocations Required

	UGI Gas Line (ft)	PPL Transmission Line (ft)
Western Alternative	350	4,990
Central Alternative	350	10,800
Eastern Alternative	3,500	3,230

ASH BASIN AVOIDANCE STUDIES – Environmental Findings

- Additional Residential Displacements (Needed – Not Yet Acquired)
 - **Western Alternative:** 12
 - **Central Alternative:** 14
 - **Eastern Alternative:** 7
- Productive Farmland Impacts
 - **Western Alternative:** 65 acres
 - **Central Alternative:** 78 acres
 - **Eastern Alternative:** 50 acres
- Noise Impacted Residences
 - **Western Alternative:** 107
 - **Central Alternative:** 108
 - **Eastern Alternative:** 68

STATION #2

PENNDOT'S RECOMMENDED ALTERNATIVE

Eastern Alternative

- Better meets traffic needs of project
- Least impact to residences
- Least impact to farmlands
- Least noise impacts

The selection of this alternative is not finalized until the Federal Highway Administration issues environmental clearance for the portion of CSV T and the PA 61 Connector within the ash basin focus area.

STATION #3

PENNDOT'S RECOMMENDED ALTERNATIVE

Eastern Alternative

Work performed during detailed studies to reduce impacts:

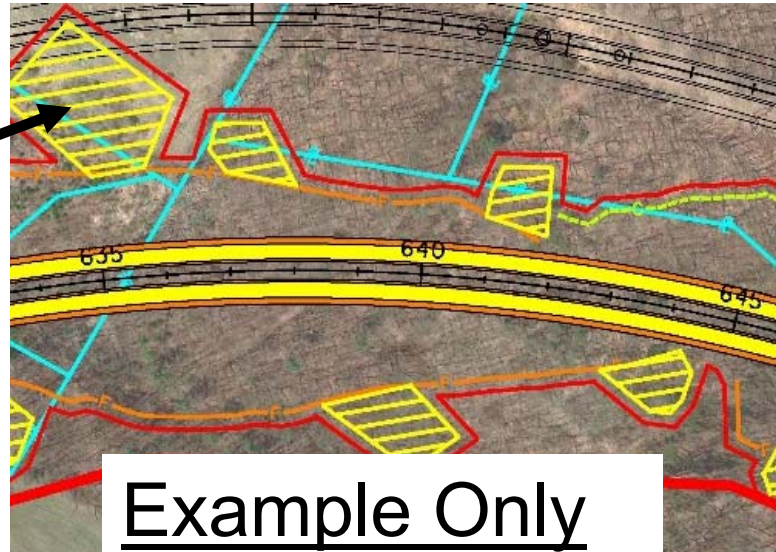
- Impacts to new UGI gas line
 - Realigned Eastern Alternative to reduce impact by about 1000 feet; have been coordinating with UGI
- Impacts to developable lands (Shamokin Dam Borough)
 - Met with Shamokin Dam Borough; made alignment shifts to Eastern Alternative, PA 61 Connector and ramps to reduce impacts by approximately 8½ acres

REVIEW OF ENTIRE CSVT SOUTHERN SECTION ALIGNMENT

- US 522 and US 11/15 Corridor
- Acid Rock Focus Area
- Ash Basin Focus Area – PennDOT Recommended Alternative
- PA 61 Connector

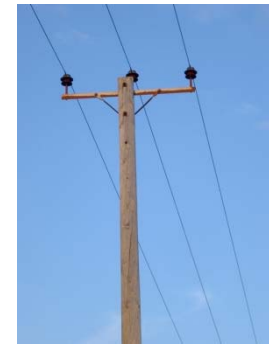
LEGEND REVIEW

Proposed Stormwater
Management Area
(temporary or permanent)



NEXT STEPS

- Project Completion
 - Environmental clearance
 - Final design
 - Mitigation
 - Right-of-way acquisition (See Station #8)
 - Utility relocations
 - Permitting
 - Construction



STATION #4

NEXT STEPS

- Environmental Clearance
 - Project Team is preparing an Environmental Assessment
 - 30-day public review and comment period
 - » Anticipated Spring 2018
 - Public hearing
 - » Anticipated late Spring 2018
 - » Project Team will make a presentation
 - » Public will have opportunity to provide oral or written testimony
 - PennDOT will consider and respond to comments before requesting environmental clearance from the Federal Highway Administration



STATION #4

NEXT STEPS

- Mitigation
 - Examples
 - Minor design adjustments
 - Slope changes
 - **Noise barriers* (if warranted)**
 - Access adjustments
 - Landscaping
 - Construction restrictions
 - Environmental mitigation



*** See Station #7 for a map showing preliminary noise barrier locations.**

STATION #4

PROJECT SCHEDULE

- Environmental Clearance -
Anticipated late Summer 2018
- Too early to estimate construction dates.
Anticipate being able to set dates next
summer.
- Project team will continue to work quickly
to complete design and advance the
project to construction.



NORTHERN SECTION UPDATE

- Earthwork and bridges are currently 50% complete
- Northern Section will be opened to traffic prior to Southern Section
 - Opening is anticipated in 2022



CSV T Northern Section (looking north across US 15 and river)



*CSV T River Bridge
(looking north across river)*

MEETING “TAKE-AWAYS”

- CSVT is moving forward. Its long-term benefits for the region are coming.
- The Eastern Alternative is recommended by PennDOT. The alternative selection is not final until environmental clearance is issued by the Federal Highway Administration.
- The project team will continue to evaluate opportunities to minimize and/or mitigate impacts.

YOUR FEEDBACK IS IMPORTANT!

- Ways to provide feedback tonight:
 - Open house
 - Questionnaire
 - » Fill out in gym
 - » Take home and mail / email
 - » Complete online – csvt.com



HOW DO I GET INFORMATION?

- Attend Future Meetings
- Visit Project Web Site – csvt.com

- Contact PennDOT District 3-0

Matthew Beck, P.E., Assistant Plans Engineer

matbeck@pa.gov

570-368-4256



OPEN HOUSE LAYOUT

STATION ① - INFORMATION & DISPLAY LAYOUT

DISPLAY LAYOUT

STATION ② - ASH BASIN AVOIDANCE STUDIES

ASH BASIN FOCUS AREA ALTERNATIVES

WESTERN ALTERNATIVE

CENTRAL ALTERNATIVE

EASTERN ALTERNATIVE

ENGINEERING CHARACTERISTICS COMPARISON

ASH BASIN FOCUS AREA ENVIRONMENTAL FEATURES

ENVIRONMENTAL IMPACTS COMPARISON

STATION ③ - PENNDOT RECOMMENDED ALTERNATIVE

REASONS FOR RECOMMENDING EASTERN ALTERNATIVE

CSV T SOUTHERN SECTION WITH PENNDOT RECOMMENDED ALTERNATIVE

STATION ④ - ANTICIPATED NEXT STEPS

ANTICIPATED NEXT STEPS - OVERALL

ANTICIPATED NEXT STEPS - ENVIRONMENTAL CLEARANCE

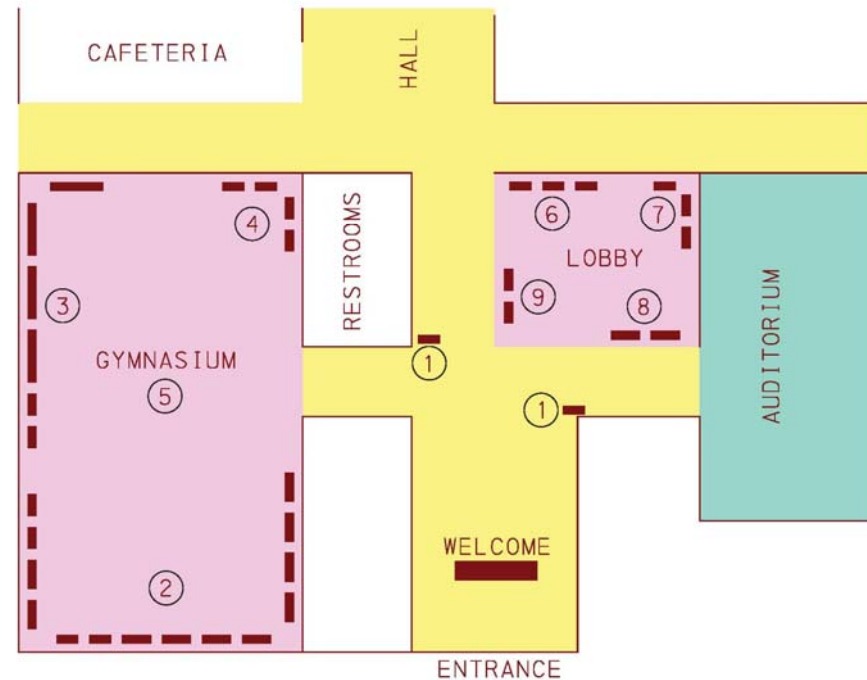
STATION ⑤ - QUESTIONNAIRE

STATION ⑥ - DESIGN CHANGES

US 522 AND AIRPORT ROAD INTERSECTION

US 522 AND US 11/15 INTERCHANGE

CORTLAND DRIVE CONNECTOR PROPOSED ALIGNMENT



STATION ⑦ - NOISE STUDIES

NOISE ABATEMENT PROCESS

PRELIMINARY NOISE BARRIER LOCATION

STATION ⑧ - RIGHT-OF-WAY

CSV T RIGHT-OF-WAY

STATION ⑨ - CSV T NORTHERN SECTION

CSV T NORTHERN SECTION PLAN WITH CSV T

NORTHERN SECTION

THANK YOU!!

*We Really Appreciate Your Time
and Input !!*



*Excellence Delivered **As Promised***